

CURVE  
 R = 2892.11'  
 L = 66.26'  
 C = N 86°10'57" E 66.26'

SOUTH 1/4 POST,  
 SECTION 5  
 T5S, R2E

SECTION 5

S/E CORNER,  
 SECTION 5  
 T5S, R2E

SECTION 4

SECTION 9

OPEN SPACE

SECTION 8

OPEN SPACE

OPEN SPACE

TECUMSEH TRAIL  
 PRIVATE - PAVED

CURVE  
 R = 50.00'  
 L = 42.97'  
 C = S 54°05'02" W 41.66'

CEMETERY

151.11'  
 S71°32'59"W

147.28'  
 S34°07'14"E

35.84'  
 S66°14'29"W

N01°32'41"E  
 240.93'

578°42'12"W 503.83'  
 13 14 15  
 16 17 18  
 N82°50'02"W 84.08'  
 S38°12'24"W 55.88'  
 S02°18'57"W 332.14'  
 S27°53'11"W 153.84'

N02°00'38"E 298.90'

N70°01'11"W 465.11'

N34°03'23"W 329.10'

N08°25'55"W 159.67'

N1°24'43"W 508.10'

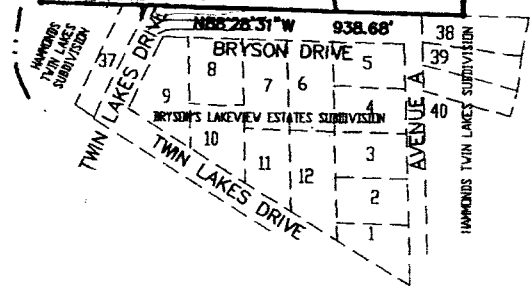
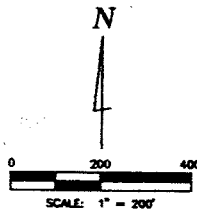
S01°30'18"W 2637.38'

OPEN SPACE

WASHINGTON LAKE

LEGEND

- CONTOUR LINE
- EDGE OF WOOD
- EXISTING PAVEMENT TO BE REPLACED
- EXISTING PAVEMENT TO REMAIN
- EXISTING GRAVEL ROAD TO REMAIN
- TRAIL
- EDGE OF WATER
- 11 UNIT NUMBER
- PROPOSED PAVED ROAD



HAMMOND TWIN LAKES SUBDIVISION